

# Brief Summary: Guidelines for the Ethical Use of Artificial Intelligence

Artificial Intelligence (AI) tools ethically used can help you develop your skills and professional competencies.



## Ethical Principles that Should Guide the Use of AI

1



### Human Dignity

Ensuring that people are treated with due respect.

2



### Non-maleficence

Avoiding any harm to people, both physical and psychological.

3



### Autonomy

Encouraging people's ability to make decisions for themselves, based on truthful information and reasonable arguments.

4



### Equity

Promoting inclusion and respect for diversity.

5



### Security

Protecting personal and institutional data, working in secure environments.

6



### Truthfulness

Avoiding deception and not transmitting biased views of reality.

7



### Transparency

Understanding how AI tools work, their scope, and limitations.

8



### Responsibility

Making informed decisions and being accountable for their consequences.








9



### Social and environmental well-being

Using AI to promote the common good and sustainability.

# Guidelines for the Ethical Use of Artificial Intelligence

-  1 Get to know and use artificial intelligence tools, as when employed properly, they can help you develop skills and competencies.
-  2 You may use AI tools as long as your professor has approved their use. You must be familiar with and respect the guidelines and policies of each course or subject.
-  3 All use of AI must align with the principles of academic integrity: honesty, respect, trust, responsibility, fairness, and courage.
-  4 Make sure to research and understand the limitations and scope of each platform or tool. It is your responsibility to be informed before using them.
-  5 You must always declare and reference its use. Visit the [Academic Integrity page](#).
-  6 You must declare the use of AI in collaborative work. This is an important exercise in transparency and honesty for your learning and for that of the team.
-  7 AI should be used with consideration for the common good, respecting human dignity, and promoting sustainable development.

## Possible Uses of AI in Your Classes



### Generate Ideas

- AI can contribute to the creative process by generating brainstorming ideas.



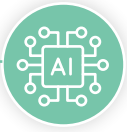
### Organize Ideas

- AI offers tools to help you organize, structure, and connect your ideas in various ways.



### Conduct Queries

- AI is a tool for consultation, reference, or initial exploration of a topic or concept to study.



### Search for Reliable Sources

- AI can help you find reliable sources, such as a public library's database.



### Create Content

- You can generate content with AI, as long as you declare its use and application in your submissions.



### Improve the Quality of a Product or Work

- Use AI tools for revision resources that provide recommendations to enhance products, such as improving text writing and formatting. Don't forget to declare the use of AI.



## Unethical Actions in the Use of AI

- **Plagiarism:** Explicitly declare the use of AI, as no material generated, either wholly or partially, by AI should be presented as your own.
- **Forgery of Documents or Formats:** Do not manipulate or alter data, images, videos, or audio without the consent of the author.
- **Alter Reality:** Do not manipulate videos, audio, voices, or images to alter reality and present it as authentic.
- **Falsify Skills and Knowledge:** Be honest about your strengths and weaknesses. AI should not be used to gain academic advantage.
- **Propagate Biases:** Do not harm human dignity or generate discrimination. Avoid spreading information if the data feeding the AI tools contain stereotypes, prejudices, or practices from a community.

**Failure to declare the use of AI or presenting a work done with these tools as if it were your own is a violation of academic integrity and will be treated as such.**



Consult the full document of **Guidelines for the Ethical Use of Artificial Intelligence.**