

# Brief Summary: Guidelines for the Ethical Use of Artificial Intelligence

Artificial Intelligence (AI) provides a wide range of alternatives for achieving our educational goals; however, it is our commitment as educators to use these tools with good judgment and integrity.

## Ethical Principles that Must Guide the Use of AI

1



### Human Dignity

Ensuring that people are treated with due respect.

2



### Non-Maleficence

Avoid any kind of harm to people, both physical and psychological.

3



### Autonomy

Encourage people's ability to make decisions for themselves based on truthful information and reasonable arguments.

4



### Equity

Promote inclusion and respect for diversity.

5



### Security

Protect personal and institutional data, working in secure environments.

6



### Truthfulness

Avoid deception and do not transmit biased views of reality.

7



### Transparency

Understand how AI tools work, their scope, and limitations.

8



### Responsibility

Make informed decisions and be accountable for their consequences.

9



### Social and Environmental Well-being

Use AI to promote the common good and sustainability.

## Guidelines for the Use of AI



Get to know AI tools, explore their functionalities, and visualize their potential.



Get trained: visit your [CEDDIE](#) to learn about the available offerings.



Use AI to develop learning and disciplinary or transversal competencies.



Strengthen the understanding of intellectual property and the importance of giving credit to authors.



Define activities that develop critical thinking in the use of AI.



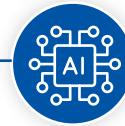
Explicitly and clearly state the AI tools that students will be able to use in your class.



Inform that the undeclared use of AI is considered a violation of academic integrity.



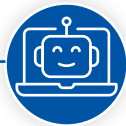
In case of academic integrity misconduct, speak with the student and report the situation to the Campus Academic Integrity Committee (CIAC).



Remember that it is not recommended to use AI detection tools, but rather to perform a review based on your experience and pedagogical criteria. Talk with your students to ensure the proper use of AI tools.

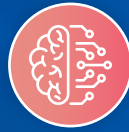


Combine the use of AI with other technologies and teaching and assessment strategies.



Declare the use of AI in designing your class or activity and ensure the accuracy and quality of the generated materials.

# To inform your students about:



How to use AI in class



How to properly  
reference AI



Visit the Academic Integrity Hub  
for Faculty by clicking [here](#).

## Unethical Actions in the Use of AI

- **Plagiarism:** Explicitly declare the use of AI, as no material generated wholly or partially by AI should be presented as one's own.
- **Forgery of documents or formats:** Do not manipulate or alter data, images, videos, or audios without the author's consent.
- **Distorting reality:** Do not manipulate video, audio, voice, or images to alter reality and present it as authentic.
- **Misrepresenting skills and knowledge:** You must be honest about your own strengths and weaknesses. AI should not be used to gain an academic advantage.
- **Spreading biases:** Do not violate human dignity or foster discrimination. Do not spread information if the data that feed AI tools contain stereotypes, prejudices, customs, or practices of a community.

**Inform your students that the undeclared use of AI and presenting work done with these tools as if it were their own is considered an academic integrity misconduct and will be treated as such.**